

4

3

27408

2

1

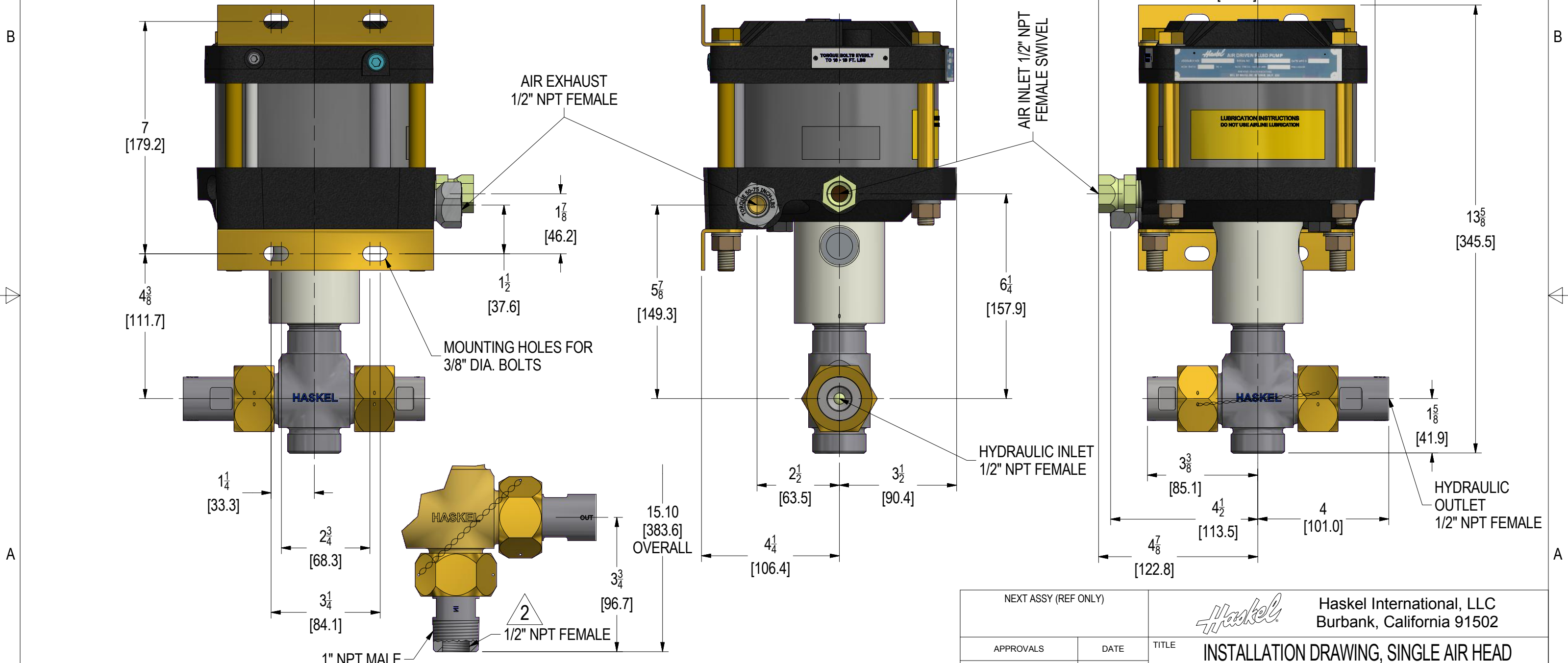
NOTES:

1. THE DIMENSIONS ON THIS DRAWING COVER AIR DRIVEN LIQUID PUMPS 1.5 HP MODELS DF, DSF, & DSTV WITH RATIOS -25, -35, -60, -100 & -150.

2. THE COMBO 1" MALE X 1/2" FEMALE NPT INLET IS USED ON PUMPS WITH RATIO DASH NO'S. -B25, -B35, -B60, & -B100.


3. DIMENSIONS ARE IN INCHES [MM], FOR REFERENCE ONLY.

REVISIONS			
REV	DESCRIPTION	DATE	CHECKED
F	REVISED PER ECO 32302	4/13/2017	CW



INFORMATION CONTAINED HEREIN IS SUBJECT TO THE EXPORT ADMINISTRATION REGULATIONS (EAR) OF THE UNITED STATES OF AMERICA AND EXPORT CLASSIFIED UNDER THOSE REGULATIONS AS (ECCN: EAR99). NO PORTION OF THIS DOCUMENT CAN BE RE-EXPORTED FROM THE RECIPIENT COUNTRY OR RE-TRANSFERRED OR DISCLOSED TO ANY OTHER ENTITY OR PERSON NOT AUTHORIZED TO RECEIVE IT WITHOUT THE PRIOR AUTHORIZATION OF HASKEL INTERNATIONAL, LLC. THIS NOTICE SHALL BE ATTACHED TO ANY REPRODUCED SECTION OF THIS DOCUMENT.

THIS DRAWING EMBODIES A CONFIDENTIAL PROPRIETARY DESIGN, ALL RIGHTS FOR REPRODUCTION, MANUFACTURING OR PATENTS ARE RESERVED BY HASKEL INTERNATIONAL, LLC.

NEXT ASSY (REF ONLY)		 <b>Haskel International, LLC</b> Burbank, California 91502		
APPROVALS	DATE	TITLE		
DRAWN S.REHOR	8/21/1970	INSTALLATION DRAWING, SINGLE AIR HEAD WITH DISTANCE PIECE, MEDIUM RATIO		
CHECKED RJL	8/21/1970	SIZE B	CAGE CODE 81400	DWG NO. 27408
APPROVED RJL	8/22/1970	SCALE: NONE	INVENTOR DRAWING	REV F
CAD FILE NAME 27408				SHEET 1 OF 1

4

3

2

1