

4

3

2

1

BILL OF MATERIAL

REVISION HISTORY

ITEM	PART NO.	DESCRIPTION	QTY.
1		MOTOR 10HP 50HZ IEC	1
2	224013	LABEL, SERIAL NO.	1
3	224152	LABEL, MOTOR ROTATION DIRECTION	1
4	224184	LABEL, TRITON	1
5	245113	ADAPTER FLANGE 5-30HP IEC CS	1
6	215154	BOLT HHCS, .625-11UNC X 2.00 LG., S.S.	4
7	215203	WASHER FLAT, .625 X 1.530 O.D., S.S.	4
8	215155	NUT, LOCK HEX, .625-11UNC S.S.	4
9	245030	MOUNTING FLANGE	1
10	239439	SHAFT ASSEMBLY	1
11	215127	SET SCREW, .375-16UNC X .312 LG., S.S.	2
12	224021	LABEL, BEARING CAUTION	1
13	224154	LABEL, WATER LEVEL INDICATOR	1
14	330099	HOUSING, 5-30HP, 50/60HZ TRITON	1
15	213053	ARB BEARING, 2.00" SPINDLE	1
	213026	CRB BEARING, 2.00" SPINDLE	1
16	215814	WASHER-TRT 2.0, 2.50" O.D. X 2.010 I.D., S.S.	1
17	215807	WASHER-TRT 2.0, KEYED, 2.50" O.D. X 2.010" I.D. S.S.,	1
18	247045	SDS SLEEVE-TRT 2.0, 2" SPINDLE	1
19		PROPELLER	1
20	215076	SET SCREW, .25-20UNC X .375 LG., S.S.	1
21	223103	ATOMIZER ASSY WITH HOLES-TRT 2.0	1
22	215331	SET SCREW, M8 X 1.25 X 8MM LG., S.S.	2
23	215808	KEY-TRITON 2.0, PROPELLER, 2" SPINDLE	1
24	4101000	BLOWER ASSY K05-TD, 3.0HP 460V	1
25	215147	BOLT HHCS, .500-13UNC X 1.25 LG., S.S.	4
26	215088	BOLT HHCS, .500-13UNC X 1.00 LG., S.S.	4
27	215100	WASHER LOCK, .500 X .879 O.D., S.S.	8

REV	ECO NO.	DESCRIPTION	BY	DATE
-	19-3074	RELEASED FOR PRODUCTION	JFW	10-8-19

B

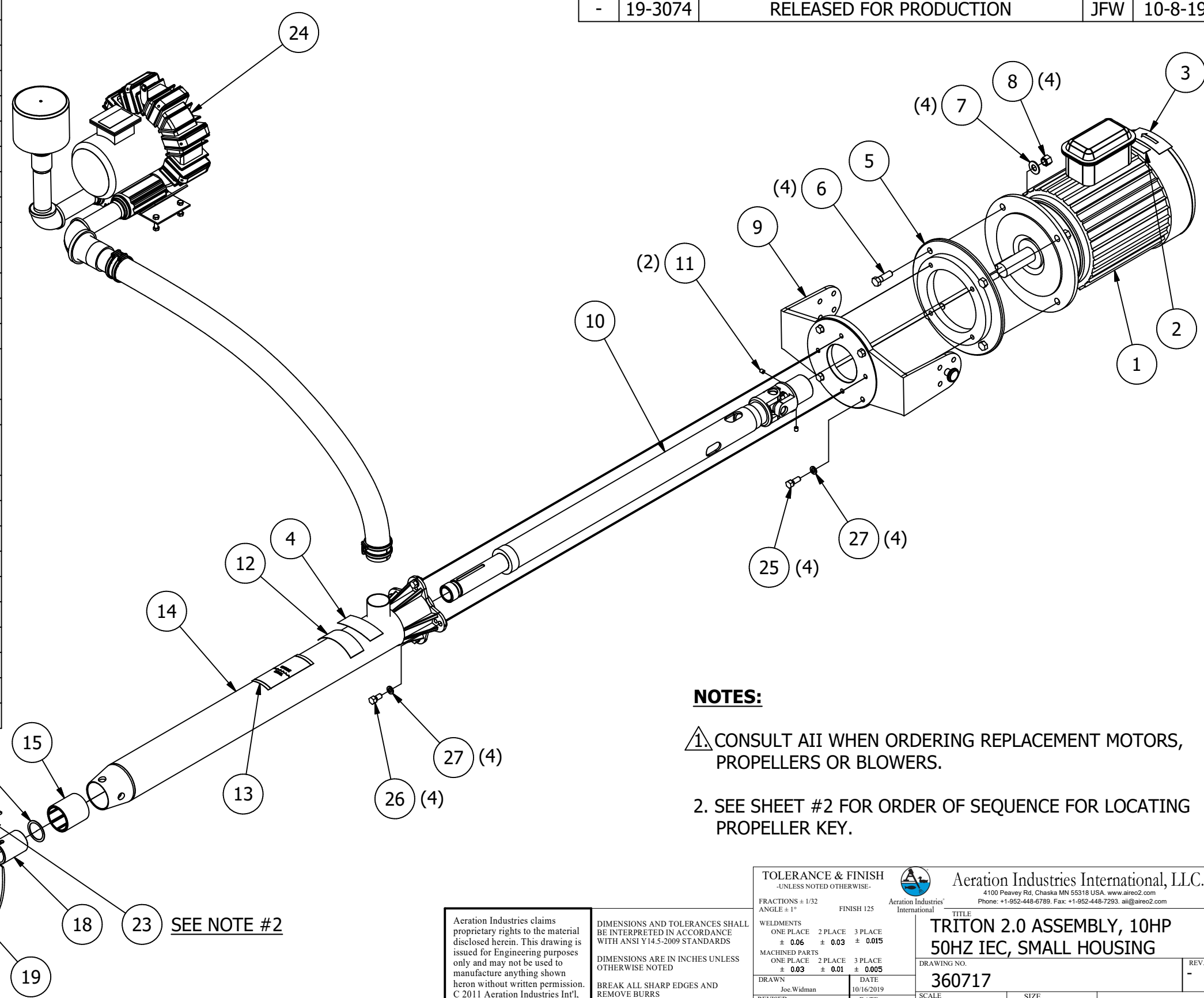
B

A

A

A

A



NOTES:

1. CONSULT AII WHEN ORDERING REPLACEMENT MOTORS, PROPELLERS OR BLOWERS.

2. SEE SHEET #2 FOR ORDER OF SEQUENCE FOR LOCATING PROPELLER KEY.

SEE NOTE #2

Aeration Industries claims proprietary rights to the material disclosed herein. This drawing is issued for Engineering purposes only and may not be used to manufacture anything shown hereon without written permission. C 2011 Aeration Industries Int'l, LLC. All Rights Reserved

DIMENSIONS AND TOLERANCES SHALL BE INTERPRETED IN ACCORDANCE WITH ANSI Y14.5-2009 STANDARDS
 DIMENSIONS ARE IN INCHES UNLESS OTHERWISE NOTED
 BREAK ALL SHARP EDGES AND REMOVE BURRS

TOLERANCE & FINISH -UNLESS NOTED OTHERWISE-		Aeration Industries International		Aeration Industries International, LLC. 4100 Peavey Rd, Chaska MN 55318 USA. www.aireo2.com Phone: +1-952-448-6789. Fax: +1-952-448-7293. aii@aireo2.com	
FRACTIONS ± 1/32 ANGLE ± 1°	FINISH 125	TITLE TRITON 2.0 ASSEMBLY, 10HP 50HZ IEC, SMALL HOUSING		DRAWING NO. 360717	REV. -
WELDMENTS ONE PLACE ± 0.06 2 PLACE ± 0.03 3 PLACE ± 0.015	MACHINED PARTS ONE PLACE ± 0.03 2 PLACE ± 0.01 3 PLACE ± 0.005	DRAWN Joe Widman		DATE 10/16/2019	SCALE -
REVISED	DATE	SIZE B 11" X 17"	SHEET 1 OF 2		

4

3

2

1

4

3

2

1

B

B

A

A

ORDER OF SEQUENCE FOR LOCATING PROPELLER KEY

1. PLACE HOUSING (ITEM #14) OVER SHAFT ASSEMBLY (ITEM #10) AND SECURE.
2. PLACE WASHER (ITEM #16) AND SLEEVE (ITEM #18) ONTO SHAFT SPINDLE.
3. ALIGN KEY OPENING IN SLEEVE WITH KEYWAY ON SHAFT SPINDLE.
4. PLACE KEY (ITEM #23) INTO KEYWAY OF SHAFT AND OPENING IN SLEEVE.
5. PLACE AND ALIGN KEYED WASHER (ITEM #17) AND PROPELLER (ITEM #19) ONTO SHAFT SPINDLE AND SECURE PROPELLER TO KEY WITH SET SCREW (ITEM #20).

Aeration Industries claims proprietary rights to the material disclosed herein. This drawing is issued for Engineering purposes only and may not be used to manufacture anything shown hereon without written permission. C 2011 Aeration Industries Int'l, LLC. All Rights Reserved

DIMENSIONS AND TOLERANCES SHALL BE INTERPRETED IN ACCORDANCE WITH ANSI Y14.5-2009 STANDARDS
 DIMENSIONS ARE IN INCHES UNLESS OTHERWISE NOTED
 BREAK ALL SHARP EDGES AND REMOVE BURRS

TOLERANCE & FINISH -UNLESS NOTED OTHERWISE-		Aeration Industries International		Aeration Industries International, LLC. 4100 Peavey Rd, Chaska MN 55318 USA. www.aireo2.com Phone: +1-952-448-6789. Fax: +1-952-448-7293. ail@aireo2.com	
FRACTIONS ± 1/32	ANGLE ± 1°	FINISH 125	TITLE		
WELDMENTS			TRITON 2.0 ASSEMBLY, 10HP		
ONE PLACE ± 0.06	2 PLACE ± 0.03	3 PLACE ± 0.015	50HZ IEC, SMALL HOUSING		
MACHINED PARTS			DRAWING NO.		
ONE PLACE ± 0.03	2 PLACE ± 0.01	3 PLACE ± 0.005	360717		
DRAWN	DATE	REV.			
Joe Widman	10/16/2019	-			
REVISED	DATE	SCALE	SIZE	SHEET	OF
		-	B 11" X 17"	2	2

4

3

2

1